



ESI[Truck] HD Diagnostics

Unmatched Coverage
& Repair Information



BOSCH

Invented for life

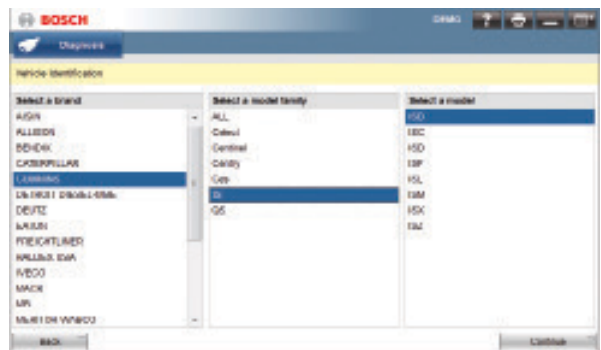
Functions Mechanics Need

- ▶ Read & clear fault codes
- ▶ Cylinder cut-out
- ▶ Cylinder compression/balance
- ▶ Injector actuations
- ▶ Key component actuations
- ▶ Key system tests

FAULT CODE	FAULT DESCRIPTION	FAULT STATUS	COUNTER
302-33 P0117	Devic device 4 auxiliary output. Current too high or short circuit caused by overvoltage.	ACTIVE FAULT	1
P02-31 P0114	Pedal position sensor. Current too low or short circuit caused by undervoltage.	ACTIVE FAULT	1
P02-31 P0114	Engine oil pressure. Current too low or short circuit caused by undervoltage.	ACTIVE FAULT	1
302-33 P0117	Data linking 304.11708 U10075. Control unit air component defective.	ACTIVE FAULT	30
P02-11 P0113	Coolant level. Current too high or short circuit caused by overvoltage.	ACTIVE FAULT	1
302-31 P0113	Devic device 3 auxiliary output. Current too high or short circuit caused by overvoltage.	ACTIVE FAULT	1
P02-10 P0114	Charge air pressure. Current too low or short circuit caused by undervoltage.	ACTIVE FAULT	1

Works with Other Software

- ▶ RP1210 VCI
- ▶ Compatible with industry software including most OEM's



Best Aftermarket Coverage

- ▶ Truck Brands
Freightliner, International, Kenworth, Mack, Volvo, Peterbilt, Sterling, Western Star
- ▶ Engine Brands
Cummins, Caterpillar, Detroit Diesel-MBE, Volvo Mack, Navistar, PACCAR, Perkins, Deutz, MTU
- ▶ Brake Systems
- ▶ Transmissions
- ▶ Trailer ABS
- ▶ In-Depth Heavy Duty, Medium Duty
- ▶ Light Duty basic

NEW FOR 2016

Troubleshooting Repair Service

- ▶ +13,000 code fixes
- ▶ Step-by-step diagnose and repair

ESI[Truck] Ordering Information

Bosch ESI[truck] 3824

- ▶ Includes ruggedized 10" tablet
- ▶ RP1210 Data Link Adapter
- ▶ 6 Pin, 9 Pin, and 16 Pin Connectors
- ▶ ESI[truck] Diagnostics Software
- ▶ External DVD Drive
- ▶ One year warranty



Bosch ESI[truck] 3824BSC

- ▶ RP1210 Data Link Adapter
- ▶ 6 Pin, 9 Pin, and 16 Pin Connectors
- ▶ ESI[truck] Diagnostics Software
- ▶ One year warranty



Bosch ESI[truck] Trailer Adapter 3824-06

7-pin PLC adapter for trailer ABS diagnostics

- ▶ J2497 Power Line Carrier (PLC) communication compatible
- ▶ Allows direct connection to trailer
- ▶ Works with tractor present or without the tractor present
 - External power supply is necessary without tractor
- ▶ Bosch ESI[truck] trailer ABS coverage for Bendix, Haldex, Meritor Wabco and Wabash systems



Bosch ESI[truck] License Renewal 3824-08

- ▶ 12-Month Security Card



Bosch ESI[truck] Repair Information Subscription 3824-08R

- ▶ Fixes for +13,000 trouble codes
- ▶ Fixes for engine symptoms



BOSCH
Invented for life

Learn More at www.boschdiagnostics.com
Customer Service/Order Entry: 1-800-533-6127